

MX3050V
MX3550V
MX4050V



THE RENAISSANCE OF COLOUR

ESSENTIALS SERIES COLOUR DOCUMENT SYSTEMS



SHARP®

Be Original.

The Sharp Essentials Series colour document systems deliver strong value, enhanced integration, and powerful productivity.

THE NEW BENCHMARK OF INNOVATION

essentials

The Sharp **MX3050V, MX3550V, and MX4050V ESSENTIALS SERIES COLOUR WORKGROUP DOCUMENT SYSTEMS** offer stunning colour output with exceptional ease of use. These new models are designed to provide customers with a seamless, intuitive experience, and the confidence in knowing their jobs will come out right the first time, every time. The new colour Essentials Series focuses on value as well as user operability, and draws inspiration from the latest networking and imaging technologies available today, all to create a document system that delivers the productivity you need, with the reliable performance you want.

Key Features

- **EASE OF USE** – Sharp's customizable touchscreen display offers a user-friendly graphical interface with a clean design, simplified Easy Modes, and integrated operation guide.
- **INTEGRATION** – Available Sharp **OSA®** modules enable easy integration with network applications and cloud services, which can unlock advanced capabilities to help you better manage your workflow.
- **PRODUCTIVITY** – Standard full multifunction capability out-of-box, including copying, **PCL® 6** network printing and colour network scanning, combines with an **easy-to-use graphical interface** and a **10-second warm up time** to offer unmatched value.

The **MX3050V, MX3550V, and MX4050V COLOUR ESSENTIALS SERIES** offer customers powerful multitasking features enabling them to quickly execute the ever-changing workflow tasks of today's busy office environments. And with Sharp's industry-leading security features, you can rest assured that your intellectual property is protected from the first day of operation to the time of trade-in. That's the **SHARP DIFFERENCE**.



DESIGNED TO DELIVER PERFORMANCE AND PRODUCTIVITY



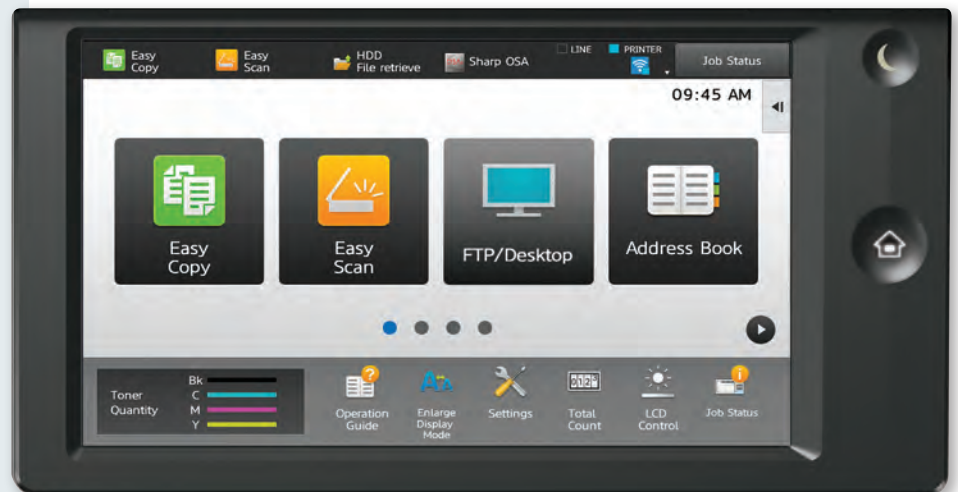
EASY-TO-USE

ENHANCED INTEGRATION

VERSATILE PRODUCTIVITY

A flexible design plus multifunctional capability allow you to meet tomorrow's document needs today.

- Network-ready **PCL 6** and available **true Adobe® PostScript® 3™** printing systems combined with available **DirectOffice technology** lets you direct print PDFs, select Microsoft Office formats, and more!
- Available **wireless networking** feature can connect directly to your network or to mobile devices for convenient printing and scanning with the **Sharpdesk® Mobile App**.
- Large 10.1" (diagonally measured) **customizable touchscreen display** with a clean design enables easy access to features and functions when setting up jobs.



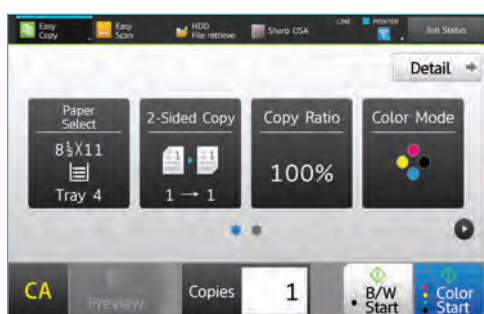
- **Easily access popular cloud applications**, including Microsoft® OneDrive™ for Business, SharePoint® Online, and Google Drive™ with Sharp's available Cloud Connect features.
- Standard **100-sheet reversing single-pass document feeder** scans documents at speeds up to **80 images per minute (ipm)**.
- Sharp's **Colour Consistency System** with next generation image process control delivers high-quality colour output and maintains optimum colour balance and toner density page after page.
- Optional **Compact PDF** feature dramatically reduces the file size of scanned colour documents, resulting in decreased network traffic and more efficient use of disk and cloud storage.
- Flexible paper handling system supports media up to **110 lb. cover (300 gsm)** and up to **12" x 18"** through the paper trays, allowing you to print on a wide variety of media.
- **600 x 600 dpi** printing provides clear, crisp images and enhanced clarity for fine details such as small text and graphics.



Provides up to six paper sources with available 550 + 2,100-sheet split tandem paper drawers and 3,000-sheet large capacity cassette.



ENHANCED FUNCTIONALITY – INTUITIVE DESIGN



Easy Copy Screen offers the most commonly used settings.



Standard Copy Screen offers more advanced features.



Available wireless network interface for convenient scanning and printing from mobile devices.

From paper handling to networking, the MX3050V, MX3550V, and MX4050V colour Essentials Series will exceed your expectations.

Simple and Intuitive Operation

From the most basic of copy functions, to the most complex scan jobs, the colour Essentials Series will perform them with ease and efficiency. Use one of the **Easy Modes** for fast, simple operation, with basic functions displayed in **large, clearly-labeled tiles** and keys. And for more advanced features, just touch the “Details” button—it’s that easy.

A “Well-connected” Device

Connecting a multifunction printer (MFP) to your wireless network and accessing it from mobile devices has never been so easy with the colour Essentials Series’ available wireless networking features. Print from or scan to popular cloud services such as **Microsoft OneDrive for Business**, **SharePoint Online**, and **Google Drive** with Sharp’s **Cloud Connect** features.* **Single Sign-on (SSO)** support for accessing these services makes scan-to-folder and scan-to-email operations simpler than ever. Even printing from your desktop is made easier with Sharp’s standard **serverless Print Release** function. **Easily send a job to one device, and print it on another** where it’s most convenient for you.

The Productivity You Need, the Performance You Want

When it’s time to get the job done, the Essentials Series colour document systems are outstanding performers. Quickly scan documents at speeds up to **80 images per minute**. Then use the **manual stapling feature** on select finishers to restaple your originals. **Multiple finishing options** give you the output you require, be it stacked, stapled, or saddle-stitched. There’s even an available built-in **stapleless staple** feature, which can bind up to five sheets of paper by adding a crimp to the corner of the set, saving regular staples for larger sets.



MX3550V shown with compact inner finisher.



MX3550V shown with 3K saddle-stitch finisher and large capacity cassette.

* Some features require optional equipment.

HIGH IMPACT VERSATILITY AND SCALABILITY

The MX3050V/3550V/4050V Essentials Series colour document systems provide high-performance functionality adaptable to your business needs.

innovative features

Reversing Single Pass Feeder (RSPF)

Standard 100-sheet reversing document feeder scans up to 80 ppm.

Advanced Network Scanning

Sharp's ImageSEND™ feature provides one-touch distribution to email, network folders, cloud applications and more.

Easy-to-Use Smart Touchscreen

Tablet-style menu provides quick access to features and functions.

High Quality Printing

600 x 600 dpi resolution produces razor-sharp documents. Available true Adobe® PostScript® 3™ drivers offer extensive job control.

In-line Stapling

Produce professional-looking corner-staple or edge-staple documents up to 65 pages.

Manual Stapler

Manual stapling feature makes it easy to re-staple originals after scanning.

Saddle-Stitch Finishers

Make high quality booklets up to 80 pages.

On-board Document Storage

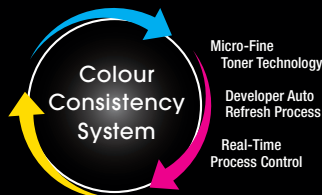
Sharp's easy-to-use Document Filing System enables users to store frequently used files.

Enhanced Security Features

256-bit data encryption with up to 10-times data overwrite, as well as Sharp's convenient End-of-Lease feature.

Large Capacity Cassette

Large capacity cassette option adds an additional 3,000 sheets of paper for a total on-line capacity of up to 6,300 sheets.



Sharp's Colour Consistency System combines Micro-fine Toner with Developer Refresh and advanced Image Process Control. These processes help ensure colour output is always at peak performance.

Advanced Finishing

Sharp gives you a choice of five high-performance finishers to give your documents a professional look. Choose from a compact inner finisher to a high capacity, floor-standing saddle-stitch finisher.

Flexible Paper Handling

Paper drawers feed up to 12" x 18" and support media up to 300 gsm. 550-sheet capacity makes it easy to reload a full ream of paper. A high capacity split tandem drawer is also available.

ENHANCED COLLABORATION FOR STREAMLINED WORKFLOWS



Direct print to popular file formats seamlessly with Sharp's available direct print expansion kit.¹



Distribute, access and print documents more easily.



With serverless Print Release technology you can securely print a job and release it from any of five colour Essentials Series models.

Powerful document workflow solutions help you work more efficiently.

Simplify Printing Your Files with Direct Printing

With the available Direct Print Expansion Kit, you can print popular file formats including **Microsoft Word**, **PowerPoint**, and **Excel**, as well as a variety of PDF formats from thumb drives, cloud applications, and mobile devices.¹ This function is enabled via **DirectOffice™** technology. With this much flexibility, you can speed through your workflow tasks faster than ever!

Distribute, Access and Print Your Documents with Ease

Sharp makes it easy to send documents to the destinations you need and goes beyond traditional network scanning with standard **Cloud Connect** features. Easily **scan documents** to **Microsoft OneDrive for Business**, **SharePoint Online**, and **Google Drive** without additional middleware. You can also print from these cloud applications. With **Single Sign-On** capability, accessing them is virtually seamless! Sharp also makes it easy to **collaborate and share documents**, storage and sharing service. Capture, index, and archive your documents easily and securely.

Scan and Print Files Easily from Mobile Devices

The Essentials Series colour document systems also make it easy to scan and print files from tablets and smart phones using **Sharpdesk® Mobile**. The colour Essentials Series also supports popular mobile technologies such as **Mopria™**, **Android™ printing framework** and **Google Cloud Print™**. You can print locally from your device or download files from supported cloud applications. Since the colour Essentials Series can connect to mobile devices through a **point-to-point wireless connection**, there is no interference with your corporate network!¹

Flexible Printing Solutions Help Speed Up Your Office Productivity

The colour Essentials Series offer standard **PCL® 6** and optional **true Adobe® PostScript® 3™** printing systems to help you speed through all of your output needs with accuracy. To help streamline your jobs, these powerful performers include **serverless Print Release technology**, enabling you to securely print a job and release it from up to five colour Essentials Series models on your network. And with Google Cloud Print web printing service, you can print from Chromebook™ notebook computers, PCs and more from virtually anywhere.

Simplify Complex Business Workflows

Sharp OSA® technology can help your business leverage the power of your network applications, back-end systems and cloud services.¹ Easily automate complex processes and help eliminate redundant tasks. Create your own custom integrations or take advantage of the growing portfolio of Sharp OSA applications available from Sharp Partner Program members.



¹ Some features require optional equipment and/or software/services.

TAKING CARE OF BUSINESS SAFELY AND SECURELY

Manage your device, help safeguard your data, help protect your business.

Businesses require that the devices on their networks are properly managed and closely monitored to ensure their data remains uncompromised. To help achieve this, the MX3050V/3550V/4050V Essentials Series offer powerful device management utilities, web-based customer training, and advanced, **multi-layered security features**.

With the **Sharp Remote Device Manager (SRDM)***, administrators can take control of system features and simplify installation and management. SRDM makes it easy to view service logs, click counts, history reports and more. Its event-driven service alerts help you monitor the device and maximize uptime. The **Remote Front Panel** feature allows administrators to view and control the machine's LCD panel from a PC to troubleshoot issues and train operators remotely. Sharp also offers both **built-in** and additional **auditing hardware and software to control, access, and track usage** of each device on the network.* And with **YourSharp™**, you get a dedicated training website customized to your model and configuration to help you understand and utilize all of the advanced features of your **your SHARP experience** Sharp product, including those for security.



To help protect employees' privacy and intellectual property, the colour Essentials Series is armed with a variety of security measures, including features such as **data encryption**, **data overwrite protection**, and **data erase**. Multiple **security protocols** help restrict access to the device while in operation, and a convenient **End-of-Lease** feature overwrites all data at time of trade-in. **Authority Groups** help manage and restrict specific copying, printing, scanning, and fax features to safeguard data and control costs. The **Admin Audit Log** feature allows IT administrators to track activity on the device. **Confidential Printing** and **Secure Fax Release** help ensure that sensitive documents are kept safe by requiring users to enter a PIN code in order to print them.



These scalable security offerings aim to **protect your intellectual property**, preserve confidential information and help your business meet regulatory requirements such as the Personal Information Protection and Electronic Documents Act (PIPEDA).

**Some features require optional equipment and/or software.*



ENVIRONMENTAL COMMITMENT



An Environmentally Responsible Approach to Product Design

Sharp is committed to environmental sustainability and corporate responsibility including planning, design, manufacturing, distribution and product end-of-life management. Sharp adheres to Green Products Guidelines in pursuit of these commitments. These guidelines include designing products that consume less power, using recycled materials, reducing the amount of material used in products and packaging, and labeling the type of materials used. Sharp also aims to design products that are upgradable, easy to repair, and easy to take apart for recycling.

The MX3050V/3550V/4050V document systems are **ENERGY STAR®** qualified and **RoHS** compliant to restrict the use of hazardous substances. These products also have the lowest **TEC** (Typical Electricity Consumption) value among competitive models, at time of this printing. Sharp MFPs are **EPEAT®** registered.



Toner Recycling Program

As part of our commitment to helping preserve the environment, Sharp offers our customers zero-waste-to-landfill recycling for Sharp consumables, including cartridges, bottles, toner collection containers and drum units. Sharp encourages customers to recycle their used Sharp toner cartridges in bulk by providing a pre-paid recycling kit for their return to our facility. Please visit <http://www.sharp.ca/support-toner.aspx> to learn more.

Environmental Leadership

As a testament to our commitment to the environment, Sharp is a multi-year winner of the **ENERGY STAR®** annual **Excellence in Energy Proficiency Product Design**. Sharp was also a previous recipient of the **Excellence in Partnership Green Contractor Award** and the **Evergreen Award** from the General Services Administration (GSA) and the Coalition for Government Procurement. These awards recognize environmentally responsible businesses and their efforts on recycling, waste reduction and affirmative procurement practices.

For more information about Sharp's environmental leadership including details about energy efficient products, electronics or toner cartridge recycling, please visit <http://www.sharp.ca/about-us-environmental-policy.aspx> to learn more.

MX3050V/M3550V/M4050V SPECIFICATIONS

Main Specifications

MX3050V	Base models include multitasking controller, 100-sheet		
MX3550V	RSPF and PCL 6 printing system, network scanning, auto		
MX4050V	duplexing, 1 x 550-sheet paper drawer, 100-sheet bypass		
	tray. Black and colour developer is included.		
Type	Colour multi-function digital document system		
Display	10.1" (diagonally measured) colour dot matrix high-resolution touch panel tilting display. 1024 x 600 dots (W-SVGA)		
Functions	Copy, print, network print, network scan, document filing and fax ¹		
Copy System	Dry electrostatic transfer/Dual component developer/Magnetic brush development/OPC drums/Belt fusing/white LED exposure		
Originals	Sheets and bound documents		
Max. Original Size	11" x 17"		
Copy Size	Min. 5.5" x 8.5", Max. 11" x 17" + 12" x 18"		
Copy Speed	30/35/40 ppm B&W/Colour (8.5" x 11")		
Multiple Copy	Max. 9,999 copies		
First Copy Time	MX3050V	MX3550V	MX4050V
Seconds²	<i>Platen Glass</i>	Mono 4.7	Mono 4.7
		Colour 6.7	Colour 6.7
	<i>RSPF</i>	Mono 7.6	Mono 7.6
		Colour 9.7	Colour 9.7
Warm Up Time	10 seconds or less		
Magnification	25% to 400% in 1% increments (with document feeder 25% - 200%)		
Original Feed	100-sheet RSPF with original size detection.		
Scan Speed	Copy: Up to 80 ipm (B&W)/41 ipm (Colour) Scan: Up to 80 ipm (B&W/Colour)		
Original Sizes	5.5" x 8.5", 8.5" x 11", 8.5" x 11" R, 8.5" x 14", 11" x 17"		
Paper Capacity	Standard: 650 Sheets/Maximum: 6,300 Sheets		
Paper Feed System	Standard: (1) 550-sheet paper drawer (letter/legal/ledger/statement size) and 100-sheet bypass tray (letter/legal/ledger/statement/envelope size). Optional: Single, double, or triple drawer paper deck (550, 1,100, or 1,650 sheets), split tandem paper drawer (2,100 sheets letter only) plus (1) 550-sheet paper drawer (letter/legal/ledger/statement size).		
Paper Weights and Types	Paper drawers: 18 lb. bond to 110 lb. cover. Split Tandem Tray: 18 lb. bond to 28 lb. bond. Other paper types include plain, pre-printed, recycled, pre-punched, letterhead and colour paper. Bypass tray: 16-28 lb. bond (plain paper), 13-16 lb. bond (thin paper), 28 lb. bond-110 lb. cover (heavy paper), 20-24 lb. bond (Monarch/Com-10 envelope), tab paper (letter). Also label paper, gloss paper, pre-printed, recycled, pre-punched, letterhead, colour paper and OHP film.		
Duplexing	Standard automatic duplex copying and printing		
CPU	Up to 1.75 GHz multi-processor design		
Interface	RJ-45 Ethernet (10/100/1000 Base-T), USB 2.0: 2 host ports (front and rear), 1 device port (rear)		
Memory	Standard 5 GB copy/print (shared)/Hard Disk Drive: 250 GB		
Hard Disk Drive	250 GB		
Copy Resolution	Scan: 600 x 600 dpi (B&W/Colour) Copy Output: Up to 600 x 600 dpi		
Colour Modes	Auto Colour Selection (ACS), Full Colour Mode, Monochrome (B/W)		
Exposure Control	Modes: Automatic, Text, Text/Photo, Text/Printed-Photo, Printed-Photo, Photo, Map, Pale-Colour Document. Settings: Auto or 9 step manual		
Halftone	256 gradations/2 levels (monochrome)		
Copy Features	Scan-Once Print-Many, electronic sorting, offset-stacking, Auto Colour Selection (ACS), Auto Paper Selection (APS), Auto Magnification Selection (AMS), Auto Tray Switching (ATS), black-white reversal, blank page skip, book copy, book divide, card shot, centre erase, centring, cover pages, dual page copy, edge erase, image edit, image preview, insert pages, job build, job programs, margin shift, mirror image, mixed size original, multi-page enlargement, original count, pamphlet style, proof copy, repeat layout, reserve copy, rotated copy, stamp, stamp custom image, suppress background, tab copy, tab-paper insertion, tandem copy, toner save mode, transparency inserts, watermark, 2-in-1 / 4-in-1 / 8-in-1 multi shot		
Account Control	Up to 1,000 users. Supports user-number authentication, login name/password or login name/LDAP password		
Output Tray Capacity	Centre Exit Tray (Main): 250 sheets (face down) Job Separator (Upper Tray): 100 sheets (face down) Right Side Exit Tray: 100 sheets (face down)		

Main Specifications (continued)

Firmware Management	Flash ROM with local (USB), network update capability and firmware update 1 to N with SRDM (Sharp Remote Device Manager)
Device Setup	Web-based management/cloning with user/administrator level login
Service/Functions	Remote Front Panel, remote access to service logs and click counts
Accessibility Features	Free stop tilting front panel, adjustment of key touch sound and speed, concave key, document feeder free stop, job programs, remote front panel, universal grip for paper trays, and disable screen timeout
Environmental Standards	International Energy Star Program Ver. 2.0, European RoHS, Blue Angel (RAL-UZ171)
Power	AC 110-127 VAC, 60 Hz, 12 Amps
Power Consumption	1.44 kW or less
Weight	Approx. 173 lbs.
Dimensions	Approx. 24" (w) x 26" (d) x 33" (h)
Network Printing System	
PDL	Standard PCL® compatible 6, optional Adobe® PostScript® 3™
Resolution	600 x 600 dpi
Print Speed	30/35/40 pages per minute (8.5" x 11")
Print Drivers	Windows Server® 2008, Windows Server 2008 x64, Windows Vista®, Windows Vista x64, Windows 7, Windows 7 x64, Windows 8.1, Windows 8.1 x64, Windows Server 2012 x64, Windows 10, Windows PPD, MAC OS® (including 10.4 to 10.11), all MAC PPD
Features	Auto configuration, serverless print release, bar code font printing, carbon copy print, chapter inserts, colour adjustment settings, colour mode, confidential print, continuous printing, custom image registration, different cover page/last page/other page, document control, document filing, duplex printing, electronic sorting, folding, form overlay, hidden pattern print, image rotation, image stamp, image type, job bypass print, job retention, layout print, margin shift, multiple pamphlet, network tandem print, N-up printing, offset stacking, page interleave, pamphlet style, poster print, proof print, print and send, punching, stapling, tab paper print, tab printing, toner save mode, transparency inserts, tray status, user authentication, watermarks, zoom print
Resident Fonts	80 outline fonts (PCL), 139 fonts (PS)
Interface	RJ-45 Ethernet 10/100/1000 Base-T, USB 2.0, Wireless
Operating Systems	Windows Vista, Windows Server 2008, Windows Systems 7, Windows 8, Mac OS X10.4-10.11, Novell® NetWare®, UNIX®, Linux® and Citrix® (XenApp 5.0, 6.0, 6.5, 7.5, 7.6) and Windows Terminal Services, SAP device types¹
Network Protocols	TCP/IP (IPv4, IPv6, IPSEC) SSL (HTTP, IPP, FTP), SNMPv3, SMTP, POP3, LDAP, 802.1x for Windows and Unix. LPD and LPR for Unix. AppleTalk® for Macintosh® environments.¹
Printing Protocols	LPR, IPP, IPPS, PAP, Raw TCP (port 9100), FTP, POP3, HTTP, and Novell Pserver/Rprinter
Network Security	IP/MAC address filtering, protocol filtering, port management, user authentication and document administration¹
Security Standards	IEEE-2600™-2008, DoD (NSTISSP) #11
Network Scanning System	
Scan Modes	Standard: Colour, monochrome, greyscale
Max. Original Size	11" x 17"
Optical Resolution	600 dpi
Output Modes	600 dpi, 400 dpi, 300 dpi, 200 dpi, 150 dpi, 100 dpi
Image Compression	Monochrome Scanning: Uncompressed, G3 (MH), G4 (MR/MMR) Colour/Greyscale: JPEG (high, middle, low) Internet Fax mode: MH/MMR (option)¹
Image Formats	Monochrome: TIFF, PDF, PDF/A, Encrypted PDF, and XPS Colour/Greyscale: TIFF, JPEG, PDF, PDF/A, Compact PDF (optional), Encrypted PDF, and XPS. Internet Fax: TIFF-FX, TIFF-F, and TIFF-S¹
Scan Destinations	Email, Desktop, FTP, Folder (SMB), USB, Internet fax (option), Super G3 fax (option)
One-touch Destinations	Up to 2,000 (combined scan destinations)
Group Destinations	Up to 500
Programs	48 (combined)

Network Scanning System (continued)

Max. Jobs	Up to 100
Network Protocols	TCP/IP and SSL (includes HTTP, SMTP, LDAP, FTP, POP3), SMB, ESMTp and 802.1x
Network Security	Email server user authentication for LDAP and Active Directory
Software	Sharpdesk® desktop personal document management software (1 user license included), Sharpdesk Mobile (download)
Direct Print Expansion Kit (Option)	
File Types	TIFF, JPEG, PCL, PRN, TXT, PNG, DOCX, XLSX, and PPTX Optional: PDF, Compact PDF (optional), Encrypted PDF, and PostScript
Methods	FTP, SMB, Web page, Email and USB memory
Optional Equipment	
MX60ABD	Deluxe Copier Cabinet Base (with front door)
MXDE25N	Stand/1 x 550-sheet Paper Drawer
MXDE26N	Stand/2 x 550-sheet Paper Drawers
MXDE27N	Stand/3 x 550-sheet Paper Drawers
MXDE28N	Stand/1 x 550 + 2,100-sheet Split Tandem Paper Drawers
MXLC17N	3,000-sheet Large Capacity Cassette (letter, requires MXDE25/26/27/28)
MXLT10	Long Paper Feeding Tray
MXFN27N	50-sheet Staple Inner Finisher
MXFN28	1K Stacking 50-sheet Staple Finisher
MXFN29	1K Stacking 50-sheet Staple/Saddle Stitch Finisher
MXFN30	3K Stacking 65-sheet Staple Finisher
MXFN31	3K Stacking 65-sheet Staple/Saddle Stitch Finisher
MXRB25	Paper Pass Unit (required for MXFN28/29/30/31)
MXPN14B	3-Hole Punch Unit (requires MXFN27)
MXPN15B	3-Hole Punch Unit (requires MXFN28/29)
MXPN16B	3-Hole Punch Unit (requires MXFN30/31)
MXSCX1	Staple Cartridge (for use with MXFN27N/MXFN28/MXFN30/MXFN31)
ARSC2	Staples for MXFN29
MXSC11	Staple Cartridge for MXFN30/31
MXSC12	Saddle-stitch Staple Cartridge (For MXFN31)
MXTR19N	Right Side Exit Tray
MXTR20	Job Separator Tray
MXTU16	Centre Exit Tray
MXEB11	Compact PDF Kit
MXEB18	Wireless LAN
MXFX15	Fax Expansion Kit
MXFWX1	Internet Fax Kit
MXPF10	Bar Code Font Kit
MXPK13	Adobe® PostScript® 3™ Expansion Kit
MXPU10	Direct Print Expansion Kit
ARSU1	Stamp Unit (requires ARSV1 Stamp Cartridge)
ARSV1	Stamp Cartridge
MXAMX1	Application Integration Module
MXAMX2	Application Communication Module
MXAMX3	External Accounting Module
MXFR51U	Commercial Data Security Kit (not available at time of launch)
DVENDFS	Generic Vendor Interface Kit
Supplies	
MX60NTBA	Black Toner Cartridge
MX60NTCA	Cyan Toner Cartridge
MX60NTMA	Magenta Toner Cartridge
MX60NTYA	Yellow Toner Cartridge
MX60NVBA	Black Developer
MX60NVSA	Cyan/Magenta/Yellow Developer
MX60NRSA	Drum
MX607HB	Toner Collection Container

¹ Some features require optional equipment. See your local dealer.

² May vary depending on product configuration, machine settings and operating and/o environmental conditions.

³ Actual transmission time will vary based on line conditions.

⁴ Based on Sharp Standard Test Chart with approximately 700 characters, letter size in standard resolution.

¹ Some features require optional equipment. See your local dealer.

² May vary depending on product configuration, machine settings and operating and/or environmental conditions.

³ Actual transmission time will vary based on line conditions.

⁴ Based on Sharp Standard Test Chart with approximately 700 characters, letter size in standard resolution.



Design and specifications subject to change without notice. Sharp, Sharp OSA, SharpSharp, YourSharp, and all related trademarks are trademarks or registered trademarks of Sharp Corporation and/or its affiliated companies. Windows, Windows Server, Excel, PowerPoint, OneDrive, and SharePoint are trademarks or registered trademarks of Microsoft Corporation. Android, Google Drive, Google Cloud Print, and Chromebook are trademarks or registered trademarks of Google, Inc. Mopria is a trademark of the Mopria Alliance. Adobe, PostScript 3 are trademarks or registered trademarks of Adobe Systems Inc. DirectOffice is a trademark of CSR Imaging US, LP, registered in the United States and other countries, used with permission. All other trademarks are the property of their respective owners. ©2018 Sharp Electronics of Canada Ltd.

335 Britannia Road East, Mississauga, ON L4Z 1W9
150 York Street, Suite 1702, Toronto, ON M5H 3S5
www.sharp.ca

SHARP®
Be Original.