



## MX620 Series

Reliability. Security. Productivity.



MX622adhe with optional trays



This is a Class A device according to the FCC Rules and international electromagnetic emissions standards. This device is not intended for use in residential or domestic environments due to potential interference to radio communications.

# Lexmark MX620 Series

The Lexmark MX620 Series offers printing at up to 50 pages per minute\*, superior print quality, enhanced security and thoughtfully engineered durability, all powered by a quad-core processor to maximize performance. A hard drive (standard on MX622adhe) and optional integrated stapler add capabilities rarely found on desktop devices.



## Get more done

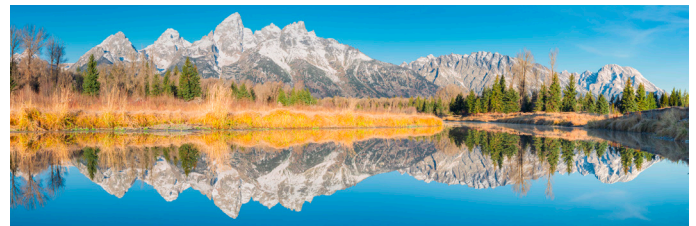
- ▶ Fax, print, copy and scan with the power of a 1.2 GHz quad-core processor, 2 GB of standard memory and available hard drive.
- ▶ Get up to 50-page-per-minute printing and scan up to 100 images per minute.
- ▶ Intuitive 7-inch e-Task touch screen offers smooth, tablet-like interaction.
- ▶ Built-in productivity apps save time and improve efficiency.
- ▶ Optional integrated stapler adds finishing capabilities.

## Ready when you are

- ▶ Long-life fuser and imaging components extend uptime.
- ▶ Unison™ Toner replacement cartridges deliver up to 25,000 pages\*\* of high-quality printing.
- ▶ Maximum input capacity of 2300 pages means fewer interruptions.
- ▶ Durable metal frame is designed for longevity.

## Robust, built-in security

- ▶ Lexmark's full-spectrum security architecture helps keep your information safe—on the document, the device, over the network, and everywhere in between.
- ▶ A range of embedded features harden device against attacks.
- ▶ Go beyond standard Confidential Print with optional security solutions like Print Release and Lexmark Secure Document Monitor.
- ▶ Keypoint Intelligence - Buyers Lab honored Lexmark with a prestigious BLI PaceSetter award for Document Imaging Security\*\*\*.



## Built for planet earth

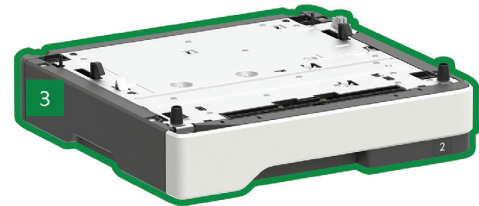
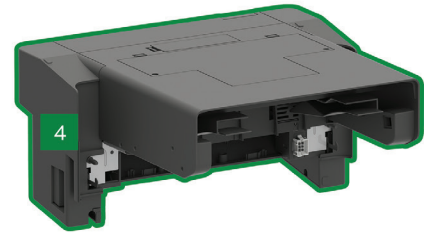
- ▶ Energy management features reduce power consumption in active use or sleep mode.
- ▶ Standard two-sided printing saves paper.
- ▶ Use of post-consumer recycled content in manufacturing saves natural resources.
- ▶ Device is rated EPEAT® Silver and ENERGY STAR® certified.
- ▶ Recycle cartridges through the award-winning Lexmark Cartridge Collection Program (LCCP).

\*Print and copy speeds measured in accordance with ISO/IEC 24734 and ISO/IEC 24735 respectively (ESAT). For more information see: [www.lexmark.com/ISOspeeds](http://www.lexmark.com/ISOspeeds).

\*\*Average standard page yield value declared in accordance with ISO/IEC 19752.

\*\*\*Award based on North America data.

# Lexmark MX620 Series



- 1 Multifunction product with 7-inch (17.8-cm) class touch screen  
21.5 x 19.3 x 18.8 inches  
545 x 489 x 476.5 mm
- 2 550-sheet tray  
5 x 15.7 x 14.7 inches  
126 x 389 x 374 mm

- 3 250-sheet tray  
3.7 x 15.7 x 14.7 inches  
95 x 389 x 374 mm
- 6 Staple finisher  
7.7 x 16.1 x 14.6\*  
195 x 409 x 371.5  
\*Adds 2.5 inches of depth to MX622de

■ Standard  
■ Optional  
Supports up to three optional trays.

© 2018 Lexmark. All rights reserved.

Lexmark, the Lexmark logo and Unison are trademarks of Lexmark International, Inc., registered in the United States and/or other countries. AirPrint and the AirPrint Logo are trademarks of Apple, Inc. ENERGY STAR® is a U.S. registered mark. EPEAT® is a trademark of EPEAT, Inc. in the United States and other countries. Google Cloud Print is a trademark of Google, Inc. MOPRIA®, the Mopria® Logo™ and the Mopria® Alliance logos are trademarks, service marks, and certification marks of Mopria Alliance, Inc. in the United States and other countries. All other trademarks are the property of their respective owners.

This product includes software developed by the OpenSSL Project for use in the Open SSL Toolkit (<http://www.openssl.org/>).

Product specifications	Lexmark MX622ade	Lexmark MX622adhe
<b>Printing</b>		
Display	Lexmark e-Task 7-inch (17.8 cm) color touch screen	
Print Speed: Up to <sup>6</sup>	Black: 50 ppm	
Time to First Page: As fast as	Black: 6 seconds	
Print Resolution	Black: 600 x 600 dpi, 2400 Image Quality, 1200 x 1200 dpi, 1200 Image Quality	
Memory / Processor	Standard: 2048 MB / Maximum: 2048 MB / Quad Core, 1200 MHz	
Hard Disk	Option available	Included in configuration
Recommended Monthly Page Volume <sup>7</sup>	2000 - 20000 pages	
Maximum Monthly Duty Cycle: Up to <sup>5</sup>	175000 pages per month	
<b>Copying</b>		
Copy Speed: Up to <sup>6</sup>	Black: 50 cpm	
Time to First Copy: As fast as	Black: 6 seconds	
<b>Scanning</b>		
Scanner Type / ADF Scan	Flatbed scanner with ADF / DADF (single pass Duplex)	
A4/Ltr Duplex Scan Speed: Up to	Black: 94 / 100 sides per minute / Color: 60 / 64 sides per minute	
A4/Ltr Simplex Scan Speed: Up to	Black: 47 / 50 sides per minute / Color: 30 / 32 sides per minute	
ADF Paper Input Capacity: Up to	100 pages 20 lb or 75 gsm bond	
<b>Faxing</b>		
Modem Speed	ITU T.30, V.34 Half-Duplex, 33.6 Kbps	
<b>Supplies<sup>4</sup></b>		
Laser Cartridge Yields (up to) <sup>1</sup>	6,000-page Cartridge, 25,000-page Ultra High Yield Cartridge, 20,000-page Extra High Yield Cartridge, 15,000-page High Yield Cartridge	
Imaging Unit Estimated Yield: Up to <sup>3</sup>	60000 pages, based on 3 average letter/A4-size pages per print job and ~ 5% coverage	
Cartridge(s) Shipping with Product <sup>1</sup>	6,000-page Starter Return Program Toner Cartridge	
<b>Paper Handling</b>		
Included Paper Handling	250-Sheet Output Bin, Integrated Duplex, 100-Sheet Multipurpose Feeder, 550-Sheet Input	
Optional Paper Handling	Inline Stapler, 550-Sheet Lockable Tray, 550-Sheet Tray, 250-Sheet Tray	
Paper Input Capacity: Up to	Standard: 650 pages 20 lb or 75 gsm bond / Maximum: 2300 pages 20 lb or 75 gsm bond	
Paper Output Capacity: Up to	Standard: 250 pages 20 lb or 75 gsm bond / Maximum: 250 pages 20 lb or 75 gsm bond	
Media Types Supported	Refer to the Card Stock & Label Guide., Transparencies, Plain Paper, Paper Labels, Envelopes, Card Stock	
Media Sizes Supported	A6, Oficio, Universal, Statement, Letter, Legal, JIS-B5, Folio, Executive, DL Envelope, A5, A4, 9 Envelope, 7 3/4 Envelope, 10 Envelope	
<b>General Information<sup>2</sup></b>		
Standard Ports	Rear USB 2.0 Specification Hi-Speed Certified Port (Type A), Front USB 2.0 Specification Hi-Speed Certified port (Type A), Gigabit Ethernet (10/100/1000), USB 2.0 Specification Hi-Speed Certified (Type B), One Internal Card Slot	
Optional Network Ports / Optional Local Ports	Marknet N8372 WiFi Option / Internal 1284-B Bidirectional Parallel, Internal RS-232C serial	
Noise Level: Operating	Print: 55 dBA / Copy: 56 dBA / Scan: 55 dBA	
Specified Operating Environment	Temperature: 10 to 32°C (50 to 90°F), Humidity: 8 to 80% Relative Humidity, Altitude: 0 - 5000 Meters (16,404 Feet)	
Limited Warranty - See Statement of Limited Warranty	1-Year Onsite Service, Next Business Day	
Size (in. - H x W x D) / Weight (lb.)	21.5 x 19.3 x 18.8 in. / 49.2 lb.	

All information in this brochure is subject to change without notice. Lexmark is not liable for any errors or omissions.

**This is a Class A device according to the FCC Rules and international electromagnetic emissions standards. This device is not intended for use in residential or domestic environments due to potential interference to radio communications.**

<sup>1</sup>Average standard page yield value declared in accordance with ISO/IEC 19752. <sup>2</sup>Printers are sold subject to certain license/agreement conditions. See [www.lexmark.com/printerlicense](http://www.lexmark.com/printerlicense) for details. <sup>3</sup>Actual Yield may vary based on other factors such as device speed, paper size and feed orientation, toner coverage, tray source, percentage of black-only printing and average print job complexity. <sup>4</sup>Product functions only with replacement cartridges designed for use in a specific geographical region. See [www.lexmark.com/](http://www.lexmark.com/) regions for more details. <sup>5</sup>"Maximum Monthly Duty Cycle" is defined as the maximum number of pages a device could deliver in a month using a multishift operation. This metric provides a comparison of robustness in relation to other Lexmark printers and MFPs. <sup>6</sup>Print and copy speeds measured in accordance with ISO/IEC 24734 and ISO/IEC 24735 respectively (ESAT). For more information see: [www.lexmark.com/ISOspeeds](http://www.lexmark.com/ISOspeeds). <sup>7</sup>"Recommended Monthly Page Volume" is a range of pages that helps customers evaluate Lexmark's product offerings based on the average number of pages customers plan to print on the device each month. Lexmark recommends that the number of pages per month be within the stated range for optimum device performance, based on factors including: supplies replacement intervals, paper loading intervals, speed, and typical customer usage.