

## Color imageCLASS MF743Cdw

Color | Compact | Multifunction

Print up to 28 ppm

Print up to 8-1/2" x 14"

850-sheet maximum paper capacity

Three-year limited warranty standard

Designed for small and medium-size businesses, the Canon Color imageCLASS MF743Cdw offers feature-rich capabilities with high-quality imaging and minimal maintenance. Print, copy, scan, and fax capabilities help you accomplish necessary tasks with just one machine. A 5" color touchscreen delivers an intuitive user experience and can be customized by a device administrator to simplify many daily tasks.



### USABILITY

- 5" intuitive color touchscreen with smartphone-like usability.
- A unique, customized device experience with Application Library.
- Create Wi-Fi® Direct hotspot from the printer to establish a direct connection to compatible mobile device(s) without the need for an external router.



### QUALITY AND RELIABILITY

- Canon's signature reliability and engine technologies help keep productivity high and minimize the impact on support resources.
- Intuitive maintenance videos for common tasks like consumables replacement.



### WORKFLOW EFFICIENCY

- Supports mobile solutions for printing and scanning.
- Scan and convert documents to searchable digital files through a duplex document feeder.
- Designed for small print jobs with first-print time as fast as 7.5 seconds.



### COST EFFICIENCY

- High-capacity, all-in-one cartridge helps reduce overall supply costs.
- Out-of-the-box, standard two-sided printing plus the ability to print multiple pages onto one sheet helps to reduce paper consumption.



### SECURITY FEATURES

- Helps mitigate risk of confidential information loss as documents are only stored in short-term memory.
- Security settings can be set behind an administrator log-in.



### SUSTAINABILITY

- A combination of fusing technologies and low-melting-point toner minimizes power requirements and therefore uses less energy.
- Encourages environmentally conscious work practices by enabling multiple settings that can help save paper and energy.
- ENERGY STAR® certified and rated EPEAT® Silver!

## KEY FEATURES



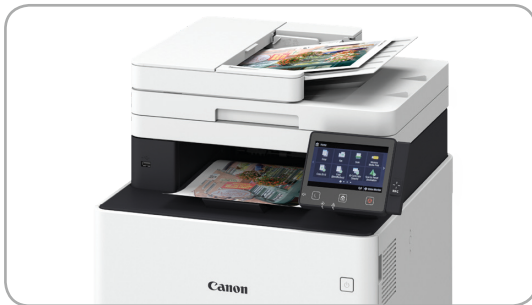
### EASY TO USE WITH APPLICATION LIBRARY

Unique to the Canon imageCLASS product line, the Application Library platform allows for one-touch button creation of key functions: Print Template, Standby Slide (screen saver), Scan-to-Preset Destination, ID Card Copy, Consumables Information, Copy (Eco), Copy (Bleed Reduce), Passport Copy, Fax and Store, Name and Scan, Copy (Enhance Text) and Language.



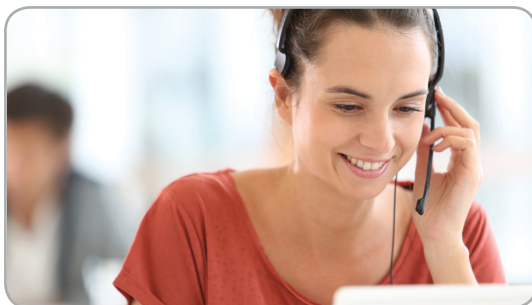
### MOBILE-FRIENDLY DEVICE ACCESS

From application-based to cloud-based to device native, the Color imageCLASS MF743Cdw model offers a variety of methods for printing from a mobile phone or tablet across compatible iOS and Android devices. The Canon PRINT Business application, which supports both platforms, offers access to additional device settings as well as the ability to scan from the printer to most mobile phones or tablets.



### FAST, SINGLE-PASS DUPLEX SCANNING

The Color imageCLASS MF743Cdw model leverages a single-pass document feeder for two-sided scanning at up to 51 images per minute (ipm) in black and white or up to 27 ipm in color. Scanned files can be converted into multiple file formats, including Hi-Compression PDF and Searchable PDF (OCR).



### 100% U.S.-BASED SERVICE AND SUPPORT

From cutting-edge technology to industry-leading response times, Canon U.S.A. takes pride in delivering complete customer satisfaction. Canon's award-winning, 100% U.S.-based, friendly, and knowledgeable Customer Service team provides expert assistance for every level of experience. The Color imageCLASS MF743Cdw device comes with a three-year limited warranty, giving you the support, peace of mind, and value your business deserves.



# SPECIFICATIONS

## Main Unit

### Core Functions

Standard: Print, Copy, Scan, Fax, Send (Lite)

### Item Code

3101C011

### Processor

Canon Custom Processor

### Control Panel

5" Color Touch Panel

### Memory

1 GB

### Standard Interface Connection

USB 2.0 x2 (Host), USB 2.0 x1 (Device) High-Speed, 10/100/1000Base-T Ethernet (Network), Wi-Fi 802.11b/g/n, Wi-Fi® Direct Connection, Near Field Communication

### Paper Capacity (Letter, 20 lb. Bond)

Standard: 300 Sheets

### Paper Sources (Letter, 20 lb. Bond)

Standard: 250-sheet Paper Cassette, 50-sheet Stack Bypass  
Optional: 550-sheet Paper Cassette (Cassette Unit AF-1)

Maximum: 850 Sheets

### Paper Output Capacity (Letter, 20 lb. Bond)

Standard: 75 Sheets

### Supported Media Types

Cassettes: Thin, Plain, Recycled, Color, Thick, Coated, Label, Letter, Envelope (10 Envelopes)  
Stack Bypass: Thin, Plain, Recycled, Color, Thick, Coated, Label, Letter, Envelope (1 Envelope)

### Supported Media Sizes

Cassettes: A4, A5, B5, Letter, Legal, Statement, Executive, Envelope: COM10, Monarch, C5, DL, Custom (Min. 3" x 5" to Max. 8.5" x 14")  
Stack Bypass: Letter, Legal, Statement, Executive Envelope: COM10, Monarch, C5, DL Custom (Min. 3" x 5" to Max. 8.5" x 14")

### Supported Media Weights

Cassettes: 16 lb. Bond to 53 lb. Bond (60 to 200 g/m<sup>2</sup>)  
Stack Bypass: 16 lb. Bond to 53 lb. Bond (60 to 200 g/m<sup>2</sup>)

### Warm-up Time

From Power On: 13 Seconds or Less  
From Sleep: 6.1 Seconds or Less  
Mode:

### Dimensions (W x D x H)

Standard: 18.8" x 18.8" x 18.4"  
(Desktop): (478 mm x 478 mm x 467 mm)  
Box: 23.7" x 18.8" x 23.2"  
(602 mm x 479 mm x 589 mm)

### Installation Space (W x D x H)

Standard: 21.4" x 43.8" x 29"  
(Desktop): (544 mm x 1,112 mm x 736 mm)  
Fully: 21.4" x 43.8" x 34.1"  
Configured: (544 mm x 1,112 mm x 866 mm)

### Weight<sup>2</sup>

Unit: Approx. 64 lb. (29.0 kg)  
Boxed Weight: Approx. 76.1 lb. (35 kg)

### Supported OS

Windows 7/Windows 8.1/Windows 10/Windows Server 2008/Windows Server 2008 R2/Windows Server 2012/Windows Server 2012 R2/Windows Server 2016/Mac OS X v10.9.5 (or later)

### What Comes In The Box

MF743Cdw Product, Cartridge 055 CMY Starter: 1,200 Yield/Black Standard: 2,300 Yield, Power Cord, Telephone Cable, Starter Guide, User Software DVD-ROM, Warranty Card

## Print Specifications

### Printing Method

Laser Beam Printing

### Print Speed<sup>3</sup>

Up to 28 ppm (Letter); Up to 22.9 ppm (Legal)

### First-Print-Out Time

Approx. 7.5 Seconds

### Recommended Monthly Page Volume

750 - 4,000 Pages

### Print Resolution (dpi)

600 x 600

### Standard Page Description Languages

UFR II

### Double-Sided Printing

Automatic (Standard)

### Direct Print

Available from USB Memory (JPEG, TIFF, PDF)

### Printing from Mobile and Cloud-based Services<sup>4</sup>

Apple® AirPrint®, Canon PRINT Business, Mopria™ Print Service, Google Cloud Print™<sup>5</sup>

## Copy Specifications

### Copy Speed

Up to 28 ppm (Letter); Up to 22.9 ppm (Legal)

### First-Copy-Out Time (Letter)

Platen: 9.5 seconds/11.1 seconds (BW/Color)  
ADF: 9.9 seconds/11.8 seconds (BW/Color)

### Copy Resolution (dpi)

600 x 600

### Copy Size

Platen: Up to Letter  
ADF: Up to Legal

### Multiple Copies

Up to 999 Copies

### Magnification

25% - 400% (1% Increments)

### Preset Reductions

25%, 50%, 64%, 78%

### Preset Enlargements

129%, 200%, 400%

### Copy Features

Paper Setting, Favorite Setting, Two-sided, Original Type Selection, Cancel, N-on-1, Density Adjustment, Sharpness, Erase Frame, Collate, Copy ID Card

## Scan Specifications

### Type

Single-Pass Duplexing Automatic Document Feeder

### Document Feeder Paper Capacity

50 Sheets (20 lb. Bond)

### Document Feeder Supported Media Sizes

Legal, Letter, Statement

### Document Feeder Supported Media Weights

13-28 lb. Bond (50-105 g/m<sup>2</sup>)

### Platen Acceptable Originals

Sheet, Book

### Pull Scan

ScanGear MF for TWAIN, and WIA

### Scan Resolution (dpi)

Push Scan: Up to 300 x 600  
Pull Scan: Up to 600 x 600

### Scan-to-Mobile Devices

Canon PRINT Business

### Scan Speed (Letter)

Single-sided: 14/28 ipm (300 x 600 dpi) (Color/BW)  
Double-sided: 27/51 ipm (300 x 600) (Color/BW)

### Memory Media

Standard USB Memory (JPEG, TIFF, PDF)

## Send Specifications

### Destination

Email/Internet FAX (SMTP), SMB, FTP

### Address Book

LDAP (50)/Local (300)/Speed Dial (281)

### Send Resolution (dpi)

600 x 600 (Pull Scan), 196 x 204 (iFax), 300 x 300 (Other)

### Communication Protocol

File: FTP, SMB  
Email/iFax: SMTP, POP3, iFax (Simple)

### File Format

Standard: TIFF, JPEG, PDF (Compact, Searchable)  
Optional: PDF (Encrypted, Digital Signature)

## Fax Specifications

### Modem Speed

Super G3: 33.6 kbps  
G3: 14.4 kbps

### Compression Method

MH, MR, MMR, JBIG

### Resolution (dpi)

400 x 400, 200 x 400, 200 x 200, 200 x 100

### Sending/Recording Size

Statement to Legal

### Fax Memory

Up to 512 Pages

### Speed Dials

Max. 281

### Group Dials/Destinations

Max. 299 Dials

### Sequential Broadcast

Max. 310 Addresses

### Memory Backup

Yes

### Fax Features

RX Mode, Resolution, Two-sided Original, Density, Sharpness, Favorite Settings, Duplex Fax

## Security Specifications

### Authentication

Standard: Department ID Authentication

### Network

Standard: IP/MAC Address Filtering, IPSEC, TLS Encrypted Communication, SNMP V3.0, IEEE 802.1X (Wired Only), IPv6, SMTP Authentication, POP Authentication, POP Authentication before SMTP

### Document

Standard: Secure Print

### Wi-Fi Authentication Methods

Wi-Fi Infrastructure: WEP 64/128 bit, WPA-PSK (TKIP/AES), Mode: WPA2-PSK (AES)  
Wi-Fi Access Point: WPA2-PSK (AES)

## Environmental Specifications

### Operating Environment

Temperature: 50 to 86° F  
Humidity: 20 to 80% RH (no condensation)

### Power Requirements

AC 120-127 V: 6.5 A, 60 Hz

### Power Consumption

Maximum: Approx. 1470 W  
Standby: Approx. 20.5 W  
Sleep Mode: Approx. 0.6 W  
Typical: 1.0 kWh  
Electricity Consumption (TEC) Rating:

### Standards

ENERGY STAR® Qualified, Rated EPEAT Silver<sup>6</sup>

## CONFIGURATION AND ACCESSORIES



**OPTIONAL CASSETTE AF-1**  
Item: 0732A032

### Extended Service Plans Available For Purchase

#### Canon eCarePAK (Exchange/Carry-In)

Canon extended service plans extend standard three-year limited warranty<sup>6</sup> support to cover additional one to two years.

**One-Year:** 5707B050

**Two-Year:** 5707B051

If service is required, you may receive a replacement model\* via advanced exchange. In this case, you'll be instructed to return the damaged unit to Canon in the replacement packaging, which also includes a prepaid shipping label. Or you may choose to carry your existing equipment to a local Authorized service facility for repair.

\* Replacement model may be new or refurbished quality.

### GENUINE® CONSUMABLES

Always look for the Canon anti-counterfeiting hologram on your Canon GENUINE product packaging.



Cartridge 055 Black	Item No.: 3016C1001	Yields 2,300 Pages
Cartridge 055 H Black	Item No.: 3020C001	Yields 7,600 Pages
Cartridge 055 Cyan	Item No.: 3015C001	Yields 2,100 Pages
Cartridge 055 H Cyan	Item No.: 3019C001	Yields 5,900 Pages
Cartridge 055 Magenta	Item No.: 3014C001	Yields 2,100 Pages
Cartridge 055 H Magenta	Item No.: 3018C001	Yields 5,900 Pages
Cartridge 055 Yellow	Item No.: 3013C001	Yields 2,100 Pages
Cartridge 055 H Yellow	Item No.: 3017C001	Yields 5,900 Pages

Use of Canon GENUINE toner cartridges helps provide longer equipment life, high yields, reliable performance, high-quality output, and minimal jamming or issues.

<sup>1</sup> For latest EPEAT ratings (Gold/Silver/Bronze), please visit [www.epeat.net](http://www.epeat.net).

<sup>2</sup> Includes consumables.

<sup>3</sup> Print speed is based on internal testing. Print speed may vary, depending on the number of copies selected as well as the settings for size, type, and orientation of paper.

<sup>4</sup> Canon PRINT Business is a free app available on the App Store® and Google Play™ Store. For more information, including compatibility, please visit <https://www.usa.canon.com/mobile-app>. Please see the respective websites for Apple AirPrint and Mopria Print Service for compatibility and additional information.

<sup>5</sup> Subscription to a third-party cloud service required. Subject to third-party cloud service providers' terms and conditions.

<sup>6</sup> Warranty program is subject to certain conditions and restrictions. See warranty card for details.

 [USA.CANON.COM](http://USA.CANON.COM)



Wi-Fi® is a registered trademark of the Wi-Fi Alliance®. As an ENERGY STAR partner, Canon U.S.A., Inc. has qualified these models as meeting the ENERGY STAR energy efficiency criteria through an EPA recognized certification body. ENERGY STAR and the ENERGY STAR mark are registered U.S. marks. Canon, imageCLASS, and the GENUINE logo are registered trademarks of Canon Inc. in the United States and may also be registered trademarks or trademarks in other countries. Canon products offer certain security features, yet many variables can impact the security of your devices and data. Canon does not warrant that use of these features will prevent security issues. Nothing herein should be construed as legal or regulatory advice concerning applicable laws; customers must have their own qualified counsel determine the feasibility of a solution as it relates to regulatory and statutory compliance. All other referenced product names and marks are trademarks of their respective owners. Specifications and availability subject to change without notice. Not responsible for typographical errors.

©2019 Canon U.S.A., Inc. All rights reserved.

0217W168  
0619R1-CMF743-PDF-IH

